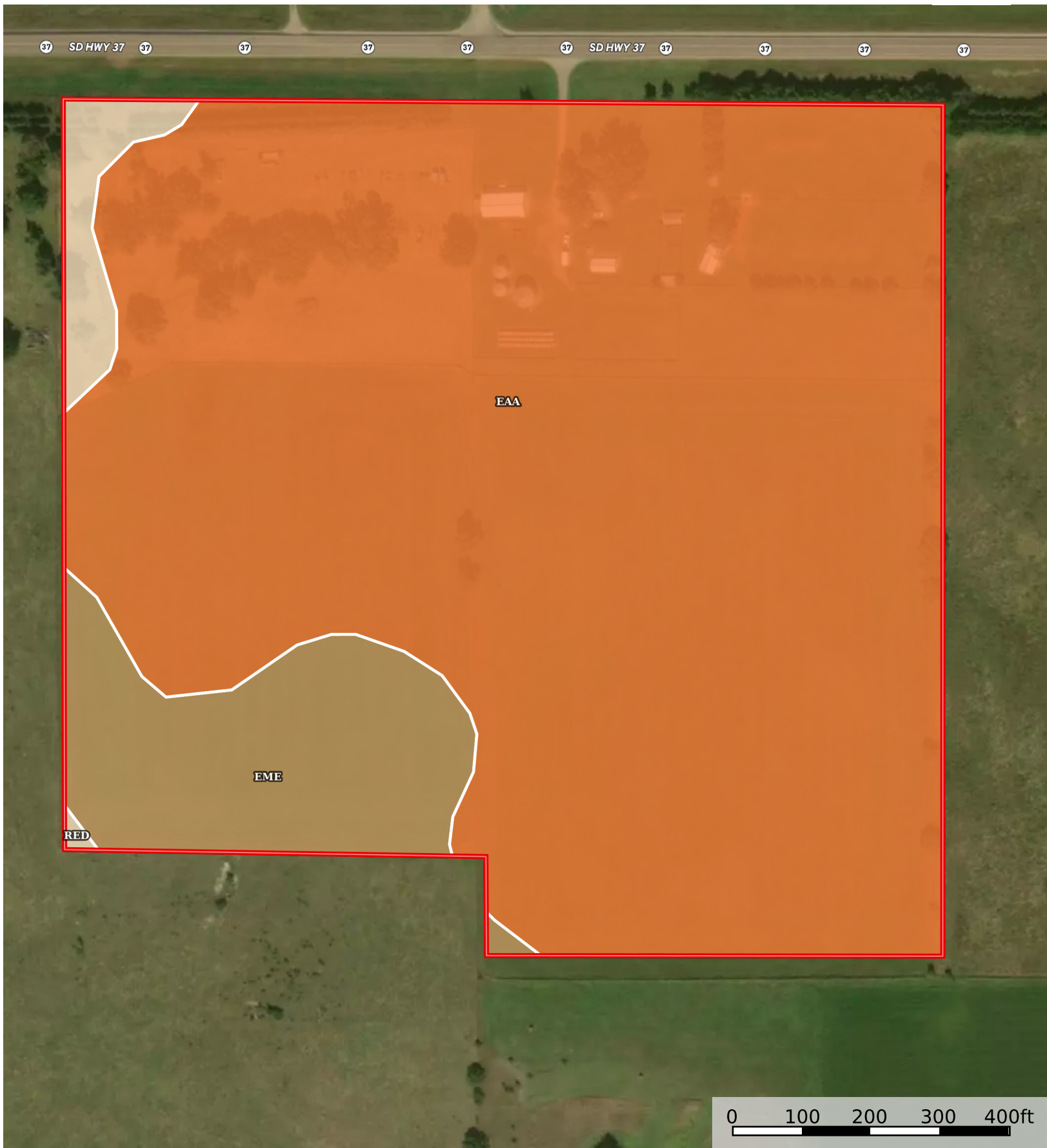


32.93 Acres - Bon Homme County

South Dakota, AC +/-



 Boundary

|  Boundary 34.05 ac

SOIL CODE	SOIL DESCRIPTION	ACRES	%	CPI	NCCPI	CAP
EaA	Eltree silt loam, 0 to 2 percent slopes	29.43	86.46	93	60	2c
EmE	Betts-Ethan loams, 15 to 40 percent slopes	3.82	11.22	19	10	7e
ReD	Redstoe variant-Gavins complex, 6 to 25 percent slopes	0.8	2.35	23	34	6e
TOTALS		34.05(*)	100%	83.08	53.8	2.65

(*) Total acres may differ in the second decimal compared to the sum of each acreage soil. This is due to a round error because we only show the acres of each soil with two decimal.

